



ARMADA®

2024



¹Availability of features vary by vehicle model year, model, trim level, packaging, and options. Please see Owner's Manual for important feature information. ²Towing varies by configuration. See Nissan Towing Guide and Owner's Manual for additional information. Always secure cargo. ³Extra cost option. ⁴Leather appointments. ⁵Available feature. ⁶Available feature shown. Use feature only when safe and legal. Compatible device and service required. Subject to third party service availability. For more information, see [NissanUSA.com/connect/legal](https://www.nissanusa.com/connect/legal). ⁷Driving is serious business and requires your full attention. If you have to use the connected device while driving, exercise extreme caution at all times so full attention may be given to vehicle operation. ⁸Use Hands Free Text Messaging when parked in a safe location. If you must use while driving, monitor traffic conditions and keep both hands on the steering wheel to prevent collisions. Compatible device required. Message and data rates may apply. ⁹Never program while driving. GPS mapping may not be detailed in all areas or reflect current road status. ¹⁰Feature availability varies by vehicle model year, model, trim level, packaging and options. Connectivity service may be required. Alexa is Amazon's cloud-based voice service. Subject to third party service availability. Amazon, Alexa, Echo, and all related marks are trademarks of [Amazon.com](https://www.amazon.com), Inc. or its affiliates. For more information see [NissanUSA.com/connect/legal](https://www.nissanusa.com/connect/legal). ¹¹Do not ride in a moving vehicle when the seatback is reclined. For the most effective protection, the seat should be upright. See Owner's Manual for safety information. ¹²Horsepower and torque figures based on premium fuel only. ¹³Up to 8,500 lbs. maximum towing for 2024 Armada. Towing varies by configuration. See Nissan Towing Guide and Owner's Manual for additional information. Cargo and load capacity limited by weight and distribution. Always secure cargo. ¹⁴Intelligent 4x4 cannot prevent collisions or provide enhanced traction in all conditions. Always monitor traffic and weather conditions. ¹⁵Nissan Safety Shield technologies can't prevent all collisions or warn in all situations. See Owner's Manual for important safety information. ¹⁶Automatic Emergency Braking with Pedestrian Detection cannot prevent all collisions and may not provide warning or braking in all conditions. Driver should monitor traffic conditions and brake as needed to prevent collisions. See Owner's Manual for safety information. ¹⁷Rear Automatic Braking cannot prevent all collisions and may not provide warning or braking in all conditions. Driver should always turn and check surroundings before driving and brake as needed to prevent collisions. See Owner's Manual for safety information. ¹⁸Rear Cross Traffic Alert may not detect all vehicles. See Owner's Manual for safety information. ¹⁹Blind Spot Warning and Intelligent Blind Spot Intervention cannot prevent collisions and may not detect every object or warn in all situations. Driver should always turn and look before changing lanes. See Owner's Manual for safety information. ²⁰Lane Departure Warning and Intelligent Lane Intervention only operate when lane markings are able to be detected. See Owner's Manual for safety information. ²¹Intelligent Cruise Control uses limited braking and is not a collision avoidance or warning system. Driver should monitor traffic conditions and brake as needed to prevent collisions. See Owner's Manual for safety information. ²²Remote Engine Start System to be used only in accordance with laws or rules in effect in your vehicle's location. ²³Sonar System may not detect every object. Driver should always check surroundings before driving. See Owner's Manual for safety information. ²⁴Cargo and load capacity limited by weight and distribution. Always secure cargo. Heavy loading of the vehicle with cargo, especially on the roof, will affect the handling and stability of the vehicle. ²⁵Information displayed is dependent on how vehicle is equipped. Driving is serious business and requires your full attention. If you have to use the feature while driving, exercise extreme caution at all times so full attention may be given to vehicle operation. ²⁶Intelligent Around View® Monitor cannot eliminate blind spots and may not detect every object. Driver should always turn and check surroundings before driving. See Owner's Manual for safety information. ²⁷120-volt power outlet is intended only for use with compatible items. Please check specifications of wattage and amperage of items to be plugged in to determine compatibility. ²⁸Intelligent Back-Up Intervention may not detect every object. Driver should always turn and check surroundings before driving. See Owner's Manual for safety information. ²⁹Intelligent Rear View Mirror may not detect every object and does not eliminate blind spots or warn of moving objects. See Owner's Manual for safety information. ³⁰Traffic Sign Recognition may not detect and read all traffic signs in all conditions. Driver should monitor all traffic signs and obey all traffic laws. See Owner's Manual for details. ³¹For complete information concerning warranty coverage, conditions, limitations, and exclusions, see your Nissan dealer and [parts.NissanUSA.com](https://www.nissanusa.com) for warranty details. ³²All non-Nissan Genuine Accessories are not warranted by Nissan. Refer to accessory product manufacturer for warranty details. Nissan limited warranty also does not cover damages or failures to the vehicle caused by improper installation, improper alterations, or use of non-Nissan-affiliated parts/accessories. Contact your Nissan dealer or read your vehicle's Warranty Information Booklet for details. ³³Genuine Nissan Accessory Roof Rail Crossbars have a maximum weight limit of 100 lbs. ³⁴Only front kick plates illuminate. ³⁵Dual Camera Drive Recorder to be used only in accordance with any laws or rules in effect in your vehicle's location that may apply to audio or video recordings of drivers and passengers. ³⁶Vehicle shown is for illustrative purposes only. Not representative of brochure's model year/model. ³⁷Brake Assist cannot prevent all collisions and may not provide warning or braking in all conditions. Driver should monitor traffic conditions and brake as needed to prevent collisions. See Owner's Manual for safety information. ³⁸Intelligent Driver Alertness cannot provide a warning in every situation. See Owner's Manual for safety information. ³⁹Intelligent Forward Collision Warning cannot prevent collisions. See Owner's Manual for safety information. ⁴⁰RearView Monitor may not detect every object and does not eliminate blind spots or warn of moving objects. See Owner's Manual for safety information. ⁴¹Vehicle Dynamic Control cannot prevent collisions due to abrupt steering, carelessness, or dangerous driving techniques. It should remain on when driving, except when freeing the vehicle from mud or snow. See Owner's Manual for safety information. ⁴²Rear Door Alert System does not detect people or cargo. Always check rear seat before exiting. See Owner's Manual for safety information. ⁴³Air bags are only a supplemental restraint system. Always wear your seat belt. Rear-facing child restraints should not be placed in the front-passenger's seat. All children 12 and under should ride in the rear seat properly secured in child restraints, booster seats, or seat belts according to their size. Air bags will only inflate in certain accidents. See Owner's Manual for safety information. ⁴⁴Fuel economy based on targeted 2023 EPA Fuel Economy Estimates for 2023 Armada. EPA data not available at time of publication. Targeted 2023 fuel economy 14 City MPG / 19 Highway MPG / 16 Combined for Armada 4x2. Targeted 2023 fuel economy 13 City MPG / 18 Highway MPG / 15 Combined for Armada 4x4. MPG estimate based on Nissan internal testing results, subject to EPA confirmation. Actual mileage may vary with driving conditions. Use for comparison only. ⁴⁵Roadside assistance coverage period varies by model year/model. For complete information concerning warranty coverage, conditions and exclusions, see your Nissan dealer and read the warranty information booklet for the model year/model. ⁴⁶Available only on Nissan vehicles with AT&T-compatible in-vehicle Wi-Fi hotspot capability. Subject to third party service availability. Trial activation required. Trial ends when all data is used or period ends, whichever comes first. Use features only when safe and legal. Data charges may apply. **Subject to AT&T terms and conditions and its privacy policy, and are not within Nissan's control. Visit www.att.com/csa for complete terms and conditions.** Trial subscription is subject to change or early termination at any time without notice. Trademarks and trade names are those of their respective owners. ⁴⁷Certain Alexa functionality is dependent on smart home technology. Amazon Alexa Skills is a trademark of [Amazon.com](https://www.amazon.com), Inc. or its affiliates. Amazon, Alexa, Echo, and all related marks are trademarks of [Amazon.com](https://www.amazon.com), Inc. or its affiliates. Apple CarPlay®, Siri®, Siri® Eyes Free, and Apple Music® are registered trademarks of Apple, Inc. AudioPilot™ is a trademark of The Bose Corporation. Bose® is a registered trademark of The Bose Corporation. Facebook® is a registered trademark of Facebook, Inc. Google, YouTube, Android Auto and other marks are trademarks of Google LLC. Google Assistant is not available in certain languages and countries. To use Android Auto on your car display, you'll need an Android phone running Android 8 or higher, an active data plan, and the Android Auto app. HomeLink® is a registered trademark of Genex Corporation. Instagram® is a registered trademark of Instagram, LLC. iPhone® is a registered trademark of Apple, Inc. All rights reserved. IPHONE® or other external device not included. The Sirius®, XM®, and SiriusXM® names and all related marks and logos are trademarks of Sirius XM Radio Inc. All other trademarks are the property of their respective owners. Twitter® is a registered trademark of Twitter, Inc. This brochure is intended for general descriptive and informational purposes only. It is subject to change and does not constitute an offer, representation or warranty (express or implied) by Nissan North America, Inc. Interested parties should confirm the accuracy of any information in this brochure as it relates to a vehicle directly with Nissan North America, Inc., before relying on it to make a purchase decision. Nissan North America, Inc., reserves the right to make changes, at any time, without prior notice, in prices, colors, materials, equipment, specifications, and models and to discontinue models or equipment. Due to continuous product development and other pre- and post-production factors, actual vehicle, materials and specifications may vary from this brochure. Some vehicles shown with optional equipment. See the actual vehicle for complete accuracy. Availability and delivery times for particular models or equipment may vary. Specifications, options and accessories may differ in Hawaii, U.S. territories and other countries. For additional information on availability, options or accessories, see your Nissan dealer or contact Nissan North America, Inc. At [NissanUSA.com](https://www.nissanusa.com), you'll find virtual product demonstrations, a way to "build your own Nissan," a dealer locator, and more information about key Nissan support services. Or if you'd prefer, call **1-800-NISSAN-3** for answers to specific questions about Armada® or any other Nissan vehicle. The Nissan names, logos, product names, feature names, and slogans are trademarks owned by or licensed to Nissan Motor Co. Ltd. and/or its North American subsidiaries. Other trademarks and trade names are those of their respective owners. **Always wear your seat belt, and please drive responsibly.** ©2023 Nissan North America, Inc. ²⁴ Armada.® 2417159-N-10/23-70K-KSL

Just add memories

Imagine a hard-core, off-road ready SUV that can seat up to eight in first-class luxury and style. This is Armada®, and it will change what you expect from a full-size SUV. Tow bigger, explore farther, and do it all with 16 standard driver assistance features that can help you feel more confident — whether you're cruising the interstate or navigating a rock-laden trail.^{1,2}



Nissan Armada® Platinum shown in Coulis Red Pearl.³



Go ahead — give your captain's orders

This is where you want to be: surrounded by quilted leather appointments, wood-tone trim, and brushed metal accents.⁵ A large, 12.3" color touch-screen display puts what's important to you within reach.⁶

Wireless Charger Keep it 100%. Armada's wireless charging pad lets you charge your compatible gadgets without the need for cords.⁷

Wireless Apple CarPlay® integration People to see? Places to be? Just ask Siri.® Equipped with Siri® voice control, Apple CarPlay,® shown here, brings your contacts, favorite messaging apps, Apple Music® playlists, Apple Maps, and more on board to your Armada. No need to plug in, just bring your compatible iPhone.®^{6, 7, 8, 9}

Android Auto™ compatibility Talk to Google Assistant on Android Auto and get things done with your voice. Easily send messages, get directions, control media, and more. Just say, "Hey Google" or, in compatible cars, long-press the voice control button on your steering wheel to get started.^{6, 7, 8, 9}

Alexa Built-in Discover a new partnership between car and home. Armada comes with Alexa Built-in, allowing you to communicate with your compatible smart home like never before. Simply say: "Alexa, open the garage" or "Alexa, start brewing my coffee."^{6, 10} You can also ask Alexa to play music, get directions, check the weather, and more.

Alexa Skill Control your Nissan from the comfort of your home. Nissan Skill for Alexa allows you to use your voice to remotely start your Nissan, unlock your doors or flash your lights. Get convenience and peace of mind right from your home.^{6, 22, 47}



Nissan Armada® Platinum shown in Quilted Espresso Brown Leather with Apple CarPlay.®^{6, 6}



“Are we there yet?” has left the conversation

Let the whole crew enjoy exceptional comfort with seating for eight — or seven with the available second-row captain’s chairs. Add in an innovative climate control system that reaches every row, and every passenger can find their ideal zone.

- Heated front and 2nd-row seats⁵
- Seating for up to 8
- Rear air conditioning with rear controls
- Power recline and one-touch folding 3rd-row seats^{5,11}



Overpackers, rejoice

Bring the big toys with a stunningly powerful Endurance® V8 engine at your command. Count on all 400 hp and 413 lb-ft of torque to make easy work out of hauling with a maximum towing capacity of 8,500 lbs.^{12, 13} And when the pavement turns to dirt, trust in available Intelligent 4x4 with 2-speed transfer case to help keep things moving.¹⁴



Standard Nissan Safety Shield® 360 and driver assist technologies

Armada helps inspire immense confidence with its wide array of advanced safety tech and driver assist features.^{1, 15}

Safety Shield 360 includes:

- Automatic Emergency Braking with Pedestrian Detection¹⁶
- Rear Automatic Braking¹⁷
- Rear Cross Traffic Alert¹⁸
- Blind Spot Warning¹⁹
- Lane Departure Warning²⁰
- High Beam Assist

Armada also comes standard with:

- Intelligent Cruise Control²¹
- Intelligent Blind Spot Intervention¹⁹
- Intelligent Lane Intervention²⁰

NissanConnect SERVICES | POWERED BY ((SiriusXM))

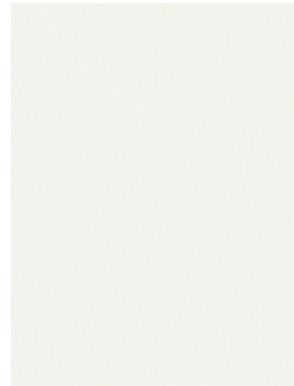
Your portable command center

With easy access to emergency response services, remote connectivity features, customizable alerts, and more, help can be as close as your compatible smartphone with NissanConnect® Services on the MyNISSAN app. 2024 Armada comes with a new 3-year premium trial of NissanConnect® Services.^{6, 7, 22}

Availability of features/services are dependent on how vehicle is equipped.



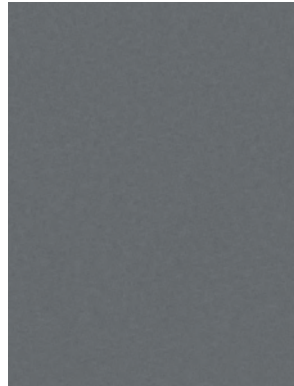
CHOOSE YOUR COLOR



Aspen White TriCoat³



Brilliant Silver Metallic



Gun Metallic

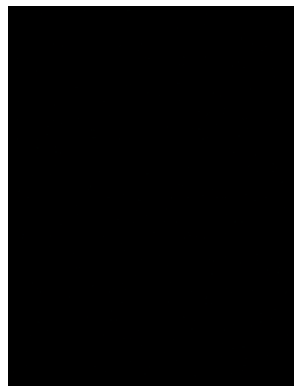
	SV	SL	PLT	SV	SL	PLT	SV	SL	PLT
Almond Leatherette	■			■			■		
Charcoal Leatherette	■			■			■		
Almond Leather ⁴		■			■			■	
Charcoal Leather ⁴		■			■			■	
Black Leather ⁴		M						M	
Quilted Almond Leather ⁴			■			■			■
Quilted Black Leather ⁴			■			■			■
Quilted Espresso Brown Leather ⁴			■			■			■



Coulis Red Pearl³



Hermosa Blue Pearl



Super Black

	SV	SL	PLT	SV	SL	PLT	SV	SL	PLT
Almond Leatherette							■		
Charcoal Leatherette							■		
Almond Leather ⁴					■			■	
Charcoal Leather ⁴					■			■	
Black Leather ⁴								M	
Quilted Almond Leather ⁴			■			■			■
Quilted Black Leather ⁴			■			■			■
Quilted Espresso Brown Leather ⁴			■			■			■

■ Standard

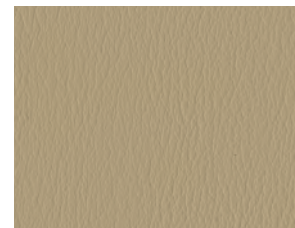
M Part of Midnight Edition Package

Nissan has taken care to ensure that the color swatches presented here are the closest possible representations of actual vehicle colors. Swatches may vary slightly due to the printing process and whether viewed in daylight, fluorescent or incandescent light. Please see the actual colors at your Nissan dealer.

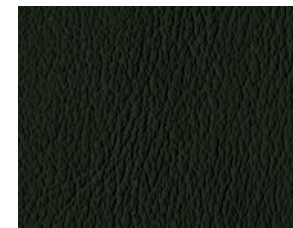
CHOOSE YOUR INTERIOR



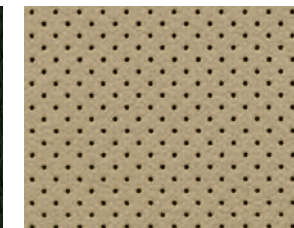
Nissan Armada® Platinum shown in Quilted Almond Leather⁴.



Almond Leatherette
SV



Charcoal Leatherette
SV



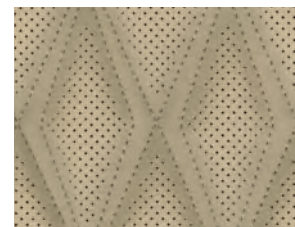
Almond Leather⁴
SL



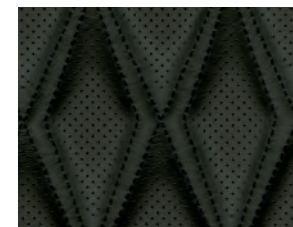
Charcoal Leather⁴
SL



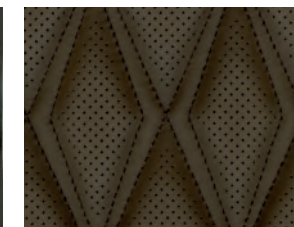
Black Leather⁴
Midnight Edition Package



Quilted Almond Leather⁴
Platinum



Quilted Black Leather⁴
Platinum



Quilted Espresso Brown Leather⁴
Platinum

CHOOSE YOUR TRIM LEVEL

SV

- Endurance® 5.6-liter V8 engine
- Available Intelligent 4x4 with 2-speed transfer case¹⁴
- Independent double-wishbone suspension with auto-leveling rear suspension
- Intelligent Cruise Control²¹
- Automatic Emergency Braking with Pedestrian Detection¹⁶
- Intelligent Lane Intervention²⁰
- Intelligent Blind Spot Intervention¹⁹
- Rear Cross Traffic Alert¹⁸
- Front and Rear Sonar System²³
- Rear Automatic Braking¹⁷
- Hill start assist
- Trailer brake controller²
- Trailer Sway Control²
- 18" 12-spoke aluminum-alloy wheels
- LED headlights with integrated signature
- LED fog lights
- Silver roof rails²⁴
- Class IV tow hitch receiver with 7-pin wiring harness²
- Dual Zone Automatic Temperature Control
- Rear air conditioning with rear controls
- Remote Engine Start System²²
- HomeLink® Universal Transceiver
- Power heated front seats
- Leatherette seats
- 7" Advanced Drive-Assist® Display²⁵
- NissanConnect® 12.3" color touch-screen display⁶
- Wireless Apple CarPlay® integration⁶
- Android Auto™ compatibility⁶
- NissanConnect® Services powered by SiriusXM with trial access to 5-year Select and 3-year Premium packages⁶
- Wi-Fi Hotspot^{6, 46}
- Alexa Built-in^{6, 10}
- Two USB-A ports and two USB-C ports⁷
- Wireless charger⁷



PLATINUM INCLUDES SL EQUIPMENT PLUS:

- Vehicle-speed-sensitive power steering
- Intelligent Back-Up Intervention²⁸
- Intelligent Rear View Mirror²⁹
- Traffic Sign Recognition³⁰
- 22" 14-spoke aluminum-alloy wheels
- Dark gray roof rails²⁴
- Chrome outside mirrors
- Windshield wiper deicer
- Rain-sensing windshield wipers
- Illuminated cup holders
- Climate-controlled front seats (heated and cooled)
- Heated outboard second-row seats
- Power recline and one-touch folding third-row¹¹
- Quilted leather-appointed seats
- Birdseye Maple wood-tone trim



CHOOSE YOUR PACKAGE

CAPTAIN'S CHAIRS PACKAGE | SL, PLATINUM

- Second-row fold-down captain's chairs with tip-up easy entry for third row
- Second-row padded center console with cup holders



MIDNIGHT EDITION® PACKAGE | SL

Includes Captain's Chairs package plus:

- 20" 12-spoke aluminum-alloy wheels
- Black lower center bumper fascias
- Black grille
- Black rear finisher
- Power heated and folding black outside mirrors with LED turn signal indicators
- Black exterior badging
- Black roof rails²⁴
- Black interior trim and headliner
- Midnight Edition Floor Mats
- Carpeted Cargo Area Protector



SL INCLUDES SV EQUIPMENT PLUS:

- Intelligent Around View® Monitor²⁶
- 20" 18-spoke aluminum-alloy wheels
- Body-color outside mirrors with puddle lights
- Auto-dimming outside mirrors
- Power sliding glass moonroof
- Power liftgate
- 120-volt AC power outlet²⁷
- Foot well lights
- Memory System — driver's seat, steering wheel, and outside mirrors
- Leather-appointed seats
- Leather-appointed door trim with double stitching
- Wood-tone trim
- Heated leather-wrapped steering wheel
- Bose Premium Audio System with 13 speakers, including center speaker and subwoofer
- Bose AudioPilot™ Noise Compensation Technology



NISSAN ARMADA® ACCESSORIES

Turn brand-new into all you

Every Genuine Nissan Accessory is custom-fit, custom-designed and durability-tested. Each one is backed by Nissan's 3-year/36,000-mile (whichever occurs first) limited warranty (if installed by the dealer at the time of new vehicle purchase) and can be financed when installed by the dealer at time of new vehicle purchase.³¹ Affiliated Yakima® accessories are not warranted by Nissan. Refer to product manufacturer for warranty details. Nissan Limited Warranty does not cover damages or failures to the vehicle caused by improper installation or alterations of any Nissan approved accessory or component. Contact your dealer/retailer for details.³²



Nissan Armada® Platinum shown in Aspen White TriCoat³ with Chrome Body Side Moldings, Chrome Outside Mirror Covers (standard on Platinum), Exterior Ground Lighting, Roof Rail Crossbars,^{24, 33} Side-Window Deflectors, Moonroof Wind Deflector, Rear Bumper Step, Hitch Ball Mount, Class III,² Hitch Ball, Class III,² and Affiliated: Yakima® SkyBox 16 — Roof Cargo Box.^{24, 32}

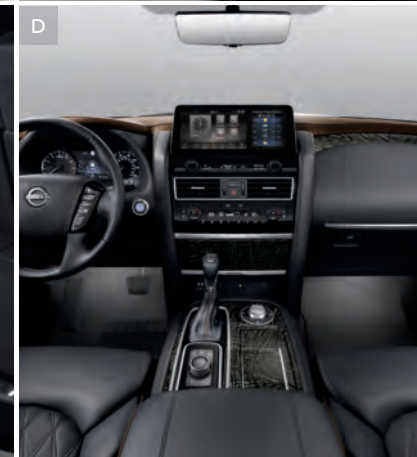
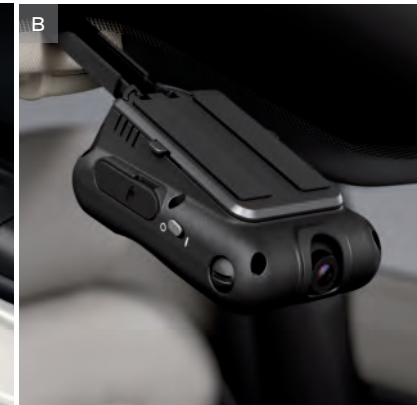
CHOOSE YOUR ACCESSORIES

- A. **Illuminated Kick Plates³⁴**
For a grand entrance every time.
- B. **Dual Camera Drive Recorder^{35, 36}**
Capture what's happening outside and inside your Armada.®
- C. **Illuminated Cargo Scuff Plate**
A bright idea that protects your liftgate.
- D. **Interior Accent Lighting**
Starts every trip with a warm glow.
- E. **All-Season Floor Mats (5-piece set)**
Neither rain, sleet, nor snow will mess your ride.
- F. **USB Charging Cable Set⁷**
All your cables for all your devices — all in one place.
- G. **All-Season Cargo Area Protector**
Preserve and protect your cargo — and your Armada.
- H. **Tablet Holder³⁶**
Let your passengers enjoy their entertainment hands-free.

Additional Accessories:

- Soft-Sided Cargo Cooler
- Hatch Tent
- Door Cup Paint Protection
- Frameless Auto-Dimming Rearview Mirror w/ HomeLink®
- Carpeted Cargo Area Protector
- Cargo Net
- Security Impact Sensor
- And More

For more information and to shop online for Armada® Genuine Nissan Accessories, go to bit.ly/24Armada-Accys



SPECIFICATIONS

Engine	SV	SL	Platinum
Endurance® 5.6-liter DOHC 32-valve V8 engine Horsepower — 400 hp @ 5,800 rpm ¹² Torque — 413 lb-ft @ 4,000 rpm ¹²	■	■	■
Variable Valve Event and Lift (VVEL™) technology	■	■	■
Direct Injection Gasoline (DIG)	■	■	■

Drivetrain	SV	SL	Platinum
Intelligent 4x4 with 2-speed transfer case ¹⁴	□	□	□
7-speed automatic transmission with manual shift mode and Downshift Rev Matching	■	■	■
Final drive ratio (2.937:1)	■	■	■

Brakes	SV	SL	Platinum
13.8" front and rear vented disc brakes	■	■	■
Anti-lock Braking System (ABS)	■	■	■
Electronic Brake force Distribution (EBD)	■	■	■
Brake Assist ³⁷	■	■	■

Suspension/Steering	SV	SL	Platinum
Independent double-wishbone front/rear suspension	■	■	■
Auto-leveling rear suspension	■	■	■
Front and rear stabilizer bars	■	■	■
Engine-speed-sensitive power steering	■	■	■
Vehicle-speed-sensitive power steering			■

Driver Assistance Technologies	SV	SL	Platinum
Intelligent Cruise Control ²¹	■	■	■
Intelligent Driver Alertness ³⁸	■	■	■
Lane Departure Warning ²⁰	■	■	■
Intelligent Lane Intervention ²⁰	■	■	■
Intelligent Forward Collision Warning ³⁹	■	■	■
Automatic Emergency Braking with Pedestrian Detection ¹⁶	■	■	■
Blind Spot Warning ¹⁹	■	■	■
Intelligent Blind Spot Intervention ¹⁹	■	■	■
Intelligent Rear View Mirror ²⁹			■
Rear Cross Traffic Alert ¹⁸	■	■	■
Intelligent Back-Up Intervention ²⁸			■
RearView Monitor ⁴⁰	■		■
Intelligent Around View® Monitor ²⁶		■	■
Front and Rear Sonar System ²³	■	■	■
Rear Automatic Braking ¹⁷	■	■	■
High Beam Assist	■	■	■
Traffic Sign Recognition ³⁰	■	■	■
Hill start assist	■	■	■
Vehicle Dynamic Control (VDC) ⁴¹ with Traction Control System (TCS)	■	■	■
Active Brake Limited Slip (ABLS)	■	■	■
Trailer Sway Control ²	■	■	■
Trailer brake controller ²	■	■	■

Wheels/Tires	SV	SL	Platinum
18" 12-spoke aluminum-alloy wheels	■		
20" 18-spoke aluminum-alloy wheels		■	
20" 12-spoke aluminum-alloy wheels		M	
22" 14-spoke aluminum-alloy wheels			■
P265/70R18 all-season tires	■		
P275/60R20 all-season tires		■	
P275/50R22 all-season tires			■

Exterior Features	SV	SL	Platinum
Black lower center bumper fascias		M	
LED low/high-beam headlights with integrated signature	■	■	■
LED fog lights	■	■	■
Silver roof rails ²⁴	■	■	
Black roof rails ²⁴		M	
Dark gray roof rails ²⁴			■
Body-color overfenders	■	■	■
Power heated and folding outside mirrors with LED turn signal indicators	■	■	■
Black outside mirrors		M	
Chrome outside mirrors			■
Outside mirrors with puddle lights		■	■
Auto-dimming outside mirrors		■	■
Rear privacy glass	■	■	■
Power sliding glass moonroof with one-touch open/close and tilt feature		■	■
Power liftgate		■	■
Class IV tow hitch receiver with 7-pin wiring harness ²	■	■	■

Comfort/Convenience	SV	SL	Platinum
Dual Zone Automatic Temperature Control	■	■	■
Rear air conditioning with rear controls	■	■	■
In-cabin microfilter	■	■	■
Nissan Intelligent Key® with Push Button Ignition	■	■	■
Remote Engine Start System ²²	■	■	■
HomeLink® Universal Transceiver	■	■	■
Rear Door Alert ⁴²	■	■	■
Variable intermittent windshield wipers	■	■	■
Rain-sensing windshield wipers	■	■	■
Intermittent rear window wiper			■
Windshield wiper deicer			■
Auto-dimming rearview mirror	■	■	■
Sun visors with illuminated vanity mirrors and extension	■	■	■
Three 12-volt DC power outlets	■	■	■
120-volt AC power outlet ²⁷		■	■
Foot well lights		■	■
Illuminated cup holders		■	■
Cargo-area storage under rear floor	■	■	■
Eight cargo tie-down hooks ²⁴	■	■	■

Seating/Appointments	SV	SL	Platinum
10-way power driver's seat	■	■	■
8-way power front-passenger's seat	■	■	■
Memory System — driver's seat, steering wheel, and outside mirrors		■	■
Heated front seats	■	■	
Climate-controlled front seats (heated and cooled)			■
Heated outboard second-row seats			■
Second-row 60/40-split fold-down bench seat	■	■	■
Second-row fold-down captain's chairs		M/C	C
Second-row padded center console with cup holders		M/C	C
Third-row 60/40-split fold-down bench seat	■	■	■
Power recline and one-touch folding third row ¹¹			■
Leatherette seats	■		
Leather-appointed seats (1st and 2nd row)		■	
Quilted leather-appointed seats (1st and 2nd row)			■
Leather-wrapped steering wheel	■		
Heated leather-wrapped steering wheel		■	■
Leather-wrapped shift knob	■	■	■
Leather-appointed door trim		■	■
Silky-carbon interior trim	■	M	
Wood-tone trim		■	
Birdseye Maple wood-tone trim			■
Midnight Edition® Floor Mats		M	
Carpeted Cargo Area Protector		M	

Infotainment	SV	SL	Platinum
7" Advanced Drive-Assist® Display ²⁵	■	■	■
NissanConnect® 12.3" color touch-screen display ⁶	■	■	■
Nissan Door to Door Navigation ⁹	■	■	■
Wireless Apple CarPlay® integration ⁶	■	■	■
Android Auto™ compatibility ⁶	■	■	■
NissanConnect® Services powered by SiriusXM with trial access to 5-year Select and 3-year Premium packages ⁶	■	■	■
Wi-Fi Hotspot ^{6, 46}	■	■	■
Alexa Built-in ^{6, 10}	■	■	■
SiriusXM Traffic and Travel Link with 3-month subscription included ⁶	■	■	■
Wireless charger ⁷	■	■	■
Bluetooth® Hands-free Phone System ⁶	■	■	■
AM/FM audio system with 6 speakers		■	■
Bose Premium Audio System with 13 speakers, including Bose AudioPilot™		■	■
Two USB-A and two USB-C ports ⁷	■	■	■
SiriusXM with 3-month subscription included ⁶	■	■	■

Safety	SV	SL	Platinum
Nissan Advanced Air Bag System with dual-stage supplemental front air bags with seat-belt and occupant-classification sensors ⁴³	■	■	■
Driver and front-passenger seat-mounted side-impact supplemental air bags ⁴³	■	■	■
Roof-mounted curtain side-impact supplemental air bags for outboard occupant head protection for all three rows ⁴³	■	■	■
LATCH System (Lower Anchors and Tethers for Children)	■	■	■

DIMENSIONS/CAPACITIES/MPG

Exterior Dimensions — Inches	
Wheelbase	121.1
Overall length/width/height	208.9/79.9/75.8
Track width (front/rear)	67.5/67.9

Vehicle Clearance	
Minimum Ground Clearance (inches) SV	9.1
Minimum Ground Clearance (inches) SL, Platinum	9.2
Angle of approach (degrees) SV	20.8
Angle of approach (degrees) SL, Platinum	21
Angle of departure (degrees) SV	22.2
Angle of departure (degrees) SL, Platinum	22.4
Breakover angle (degrees) SV	20.5
Breakover angle (degrees) SL, Platinum	20.7

Interior Dimensions — Inches	
Head room without moonroof (front)	40.9
Head room with moonroof (front)	39.8
Head room (2nd row/3rd row)	40.0/36.4
Leg room (front row/2nd row/3rd row)	41.9/41.0/28.4
Hip room (front row/2nd row/3rd row)	59.2/58.4/48.8
Shoulder room (front row/2nd row/3rd row)	63.8/63.4/60.5

Capacities	
Seating capacity with 2nd-row bench seat	8
Seating capacity with Captain's Chairs Package	7
Fuel tank (gals.)	26
Maximum towing capacity (lbs.) ¹³	8,500
Tongue weight capacity (lbs.)	850

EPA Fuel Economy Estimates ⁴⁴	
City/Highway/Combined mpg	
4x2	14/19/16
4x4	13/18/15

NISSAN ROADSIDE ASSISTANCE

Your peace of mind is on us. For 36 months or 36,000 miles, whichever comes first, your new Nissan is covered for the following:⁴⁵

- Flat-tire changes
- Trip Interruption benefits
- Jump starts
- Vehicle lockouts
- Emergency fuel delivery

Follow Nissan on:



visit [NissanUSA.com/armada](https://www.nissanusa.com/armada)

PRINTED IN USA



Sign up to get the latest on
Nissan vehicles, news, and events.

<https://www.nissanusa.com/brochures/request-brochure.html>